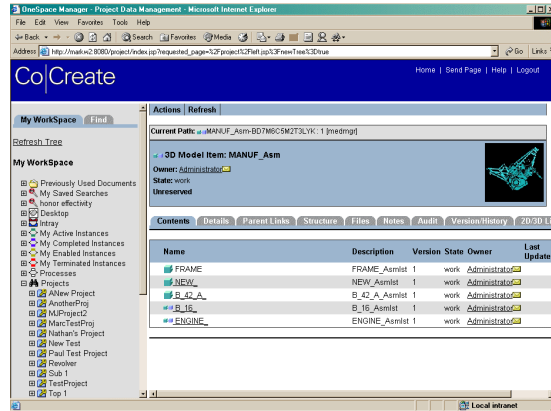


# Project Data Manager

Project Data Manager offers a productive and comprehensive environment for managing engineering data within the context of a project. The environment helps manage the collaborative design process, where teams need to work together on common projects.



## Rapid ROI

Project Data Manager deploys rapidly to provide an intuitive Explorer-like environment for organizing and managing product development data. Its web-based interface results in a low-cost, easy to learn and easy to use solution, enabling participation by all members of a development team: engineers, project managers, test, quality, manufacturing and administration. Project Data Manager provides a secure and comprehensive solution to manage the various types of project data generated by engineering teams within a company's organization.

## Managing Engineering Data

With Project Data Manager, teams can store all types of documents, such as Microsoft Word documents, PDF files and zip files. Project Data Manager keeps track of different document versions and related information about the history of the design.

## Productivity Accelerators

Project Data Manager provides a unique work organization solution called Packets, which allows the user to place multiple parts, assemblies, drawings and documentation into a packet and route it for review and approval, or further work by others. For example, packets may be used to package up a set of parts and documentation for delivery to a subcontractor.

Project Data Manager also supports life-cycle management through State Flow. Using simple drop down menus, the state of a part may easily be set to Work, Approved, or Released, resulting in increased control of access permissions. These states may be customized to match the business processes of the design team.

## Design Process Support

Project Data Manager users are able to participate in design processes such as ECR/ECO or review & approve cycles, through menu picks.

Project Data Manager users are able to signal interest in data elements (subscribe), resulting in email notification when changes are made to that element. This ensures that members of design teams are always aware of changes which affect their work.

Thumbnails, either auto-generated or manually supplied, may be displayed for all projects, folders and data elements. Clicking on the thumbnail produces a 'full-scale' view.

## Referencing Design Information

Project Data Manager enables the creation of projects, sub-projects and folders for the organization of project data. Data can be cross-linked between projects, and can be externally references via URL's. Access to project information may be controlled by the project manager according to specific user roles.

Project design-categories allow teams to link designs, drawings, and models, managed by Model Manager or Drawing Manager, into the project. Related information is automatically provided through the system. If for example, a master data is linked, information like related 3D models or 2D drawings, bill-of-material, or where-used information is made available automatically.

## Bill of Materials Management

With the addition of the optional Bill of Materials Manager module, designers benefit from additional functionality for managing bills of material. Bill of Materials Manager allows single- or multiple-level BOMs to be created using a user-friendly, integrated

# Project Data Manager

BOM editor. BOMs can easily be derived directly from the OneSpace Designer Modeling assembly structure.

## Out of Box Ready

Project Data Manager provides a pre-defined standard configuration, containing all necessary element classes and design attributes, together with user groups and release states appropriate to the environment. This allows the solution to be used as soon as it is installed.

## Team Information Sharing

Project Data Manager provides full support for teams working concurrently in collaborative design environments. Access permissions allow multiple designers to work concurrently on the same assembly without the risk of producing redundant information. Project folders provide an intuitive data organization method, and access may be controlled by project roles.

## Secure Information Management

Project Data Manager provides a secure file management environment that verifies and controls multi-user access to engineering data through

authentication and authorization, allowing only the right people to access the right information at the right time.

## Easy Customization and Extension

Project Data Manager utilizes standard technology such as XML and Java for easy customization and extension.

## Low Cost Read-Only Solution

For broad distribution at a lower cost to users who only need to find and view project data, CoCreate offers Project Data Access.

## System Requirements

OneSpace 2002 or later.

Supported Web Browsers:

- Netscape™ 6.0 (or later)
- Microsoft Internet Explorer™ 5.5 (or later)

Servers:

- Microsoft Windows 2000™ or NT™ 4.0 (or later)

Windows 2000, Windows NT, Windows XP, and Internet Explorer are registered trademarks of Microsoft Corporation.  
HP-UX is a registered trademark of Hewlett-Packard Corporation.  
Netscape is a registered trademarks of Netscape Communications Corporation  
ORACLE is a registered trademark of Oracle Corporation

Ordering Information	
Project Data Manager	C410
Project Data Manager Support	C410A
Project Data Access	C420
Project Data Access Support	C420A
Bill of Materials Manager	C430
Bill of Materials Manager Support	C430A
<b>Prerequisites</b>	
ORACLE® (OEM Run-time version)	C500

Electronic manuals are available on the OneSpace media.

# Co|Create

For more information, please contact the following CoCreate offices or visit  
[www.cocreate.com](http://www.cocreate.com)  
[www.cocreate.com/eSupport](http://www.cocreate.com/eSupport)

**Germany**  
Phone: +49 (7031) 951-0

**United Kingdom and other European countries**  
Phone: +44 (1789) 778549

**USA**  
Phone: +1 (970) 267-8000  
Toll free: +1 (888) CoCreate

**France and Spain**  
Phone: +33 (1) 69189-113

**Italy**  
Phone: +39 (02) 924425-21

**Singapore**  
Phone: +65 (550) 9665

**Japan**  
Phone: +81 (42) 352-5654

All rights to this documentation, including duplication, distribution and translation rights, are reserved.  
Right of technical modifications reserved.  
© CoCreate Software GmbH & Co.KG, 05/02

C410\_E\_2002+