

## Personal Collaboration

Personal Collaboration improves engineering productivity by connecting engineers working on design systems to extended design teams to collaboratively work on 2D drawings or 3D models. This improves early decision-making, product innovation, on-the-fly problem detection, and resolution in all stages of the product design process.

### Real-Time Collaboration

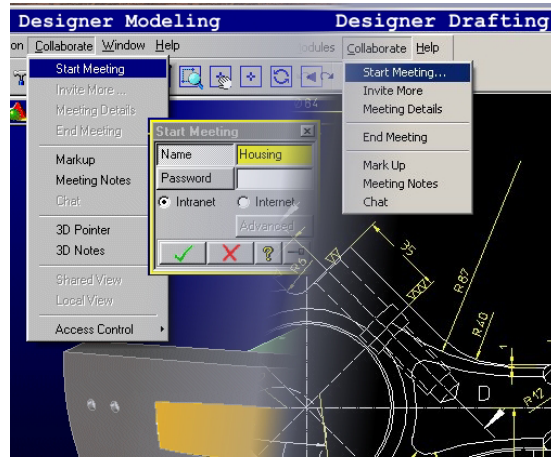
Product design teams need tools that provide rapid, unambiguous methods to collaborate around 2D drawings and 3D solid models. In the past this meant faxes, email, travel, ftp, and other iterative tools and processes. Personal Collaboration provides real-time synchronous collaboration between up to three participants over dial-up connections, intranets or the Internet. The solution is optimized for a design-centric collaboration use model and allows designers instant access to geographically dispersed teams to discuss product ideas and detect and solve problems in real-time.

### Key Benefits

- Develop superior products by involving all the right people:
  - Collaboratively design throughout the product development process
  - Increase effectiveness when dealing with custom design work
- Reduce time-to-market by working continuously with partners and suppliers:
  - Reduce design iterations and travel costs
  - Enable proactive collaboration across all design chain partners
- Involve experts from various disciplines and improve decision making:
  - Reduce misunderstandings and encourage quick decision making
  - Conduct distributed review meetings

### Starting a Meeting

Personal Collaboration can be activated from within OneSpace Designer Drafting or Modeling ensuring optimal usability for designers. Drafting and Modeling can switch from standalone design mode to collaborative meeting mode and vice versa. Designers can stay within the familiar environment of their



design system, start the collaboration meeting and set the meeting password.

### Inviting participants

After the activation of the collaboration meeting the meeting control center offers the meeting host an easy email invitation method. Up to two other collaborating parties (like suppliers, customers or sub-contractors) can be invited to join the meeting via the Reviewer client (supported by Drafting and Modeling) or the Adviser client (supported by Modeling). In the email message, the invitees find textual information about the meeting topics. The email also contains simple instructions and two click-to-join attachments for easy connection to the meeting with the Reviewer or the Adviser client, respectively.

### Shared collaboration tools

In addition to shared views and shared pointers the following collaboration tools are available within Drafting and Modeling as well as in the Reviewer and Adviser clients:

**Markup:** Any 3D solid model, document or drawing can be marked up for future reference. Markup can be used to capture issues and ideas. The integrated screen capture utility allows users to take screen shots of any application on their desktop and load them into the markup pad.

**Notes:** In addition, users can create Issues, Action Items and Decisions that are captured into the meeting history. Meeting reports can then be generated to capture intellectual property, drive downstream processes and provide accountability.

**Chat:** On-line exchange of text messages can be very helpful as an additional communication channel for hints and questions without disruption of voice communication.

## Personal Collaboration

### Collaboration with Reviewer client

The Reviewer client is an easy to use collaboration client that runs in a Web browser and has a very small footprint. It has been optimized for problem free deployment and usage that is ideal for ad-hoc collaboration with sporadic users. The embedded automated and transparent download and update mechanisms virtually makes it a no-installation component.

All changes to the drawing or the solid model will be immediately propagated to the Reviewer client, so modifications can be shown and evaluated in real time. Remote selection of 2D or 3D entities and shared cursors addition to the shared collaboration tools complement the collaboration capabilities.

### Collaboration with Adviser client

Shared views, shared pointers, whiteboards, precise measurements, and a common set of modeling capabilities provide a rich collaborative design environment. Users can take advantage of the comprehensive 3D measurement and inspection features to capture relevant information, including interference detection.

Proposed design changes can be evaluated during a meeting by actually making 3D modifications in real time. Changes to 3D solid models trigger the creation of automatic documentation.

In addition, users can create Issues, Action Items and Decisions that are captured by the meeting history.

Meeting reports can then be generated to capture intellectual property, drive downstream processes and provide accountability. Personal Collaboration can connect users together even when they work behind different firewalls. Access control ensures that only authenticated users can participate in real-time meetings, and while they collaborate together their data can be protected using 128 bit Secure Socket Layer (SSL) technology.

### System Requirements

OneSpace 2002+ and later.

Personal Collaboration runs on the same platforms as OneSpace Designer Drafting or Modeling.

The Adviser client runs on the following platforms:

- HP-UX® 11.0/11i (ACE 1199)
- Windows NT™ 4.0, 2000™, and XP™
- Solaris™ 7.0

The Reviewer client runs on the following platforms:

- Internet Explorer™ 5.5 on Windows NT™, 2000™
- Internet Explorer™ 6 on Windows 2000™, XP™
- Netscape 4.78 on Windows NT™, 2000™, XP™, HP-UX 11®, Solaris 7
- Netscape 6.21 on Windows NT™, 2000™, XP™, HP-UX 11®

The Reviewer client is available in English language, only.

Windows 2000, Windows NT, Windows XP, and Internet Explorer are registered trademarks of Microsoft Corporation.  
HP-UX is a registered trademark of Hewlett-Packard Corporation.  
Netscape is a registered trademarks of Netscape Communications Corporation  
Solaris is a registered trademark of Sun Microsystems, Inc.

### Ordering Information

Personal Collaboration	C400
Personal Collaboration Support	C400A

### Prerequisites

Modeling or	C200
Drafting	C100

Electronic manuals are available on the OneSpace media.

## Co Create

For more information, please contact the following CoCreate offices or visit

[www.cocreate.com](http://www.cocreate.com)  
[www.cocreate.com/eSupport](http://www.cocreate.com/eSupport)

**Germany**  
Phone: +49 (7031) 951-0

**United Kingdom  
and other European countries**  
Phone: +44 (1789) 778549

**USA**  
Phone: +1 (970) 267-8000  
Toll free: +1 (888) CoCreate

**France and Spain**  
Phone: +33 (1) 69189-113

**Italy**  
Phone: +39 (02) 924425-21

**Singapore**  
Phone: +65 (550) 9665

**Japan**  
Phone: +81 (42) 352-5654

All rights to this documentation, including duplication, distribution and translation rights, are reserved.

Right of technical modifications reserved.  
© CoCreate Software GmbH & Co. KG,  
05/02

C400\_E\_2002+

