

OneSpace Designer Modeling

3D Library

3D Library encourages design teams to use standard and preferred parts in the design process. This helps introduce dramatic design productivity gains and cost savings through using predefined, available 3D components.

3D Library for OneSpace Designer Modeling

This module provides a fully integrated 3D standard part library and management system for OneSpace Designer Modeling. This reduces design-time, promotes design re-use, and avoids rework; offering:

- Direct access to a wide range of international industry-standard parts.
- Flexible customizations to build standard assemblies, derive a company specific parts catalog, or prevent use of unapproved parts.
- Easy integration of a company's standard parts.
- Integrated with management of design data..

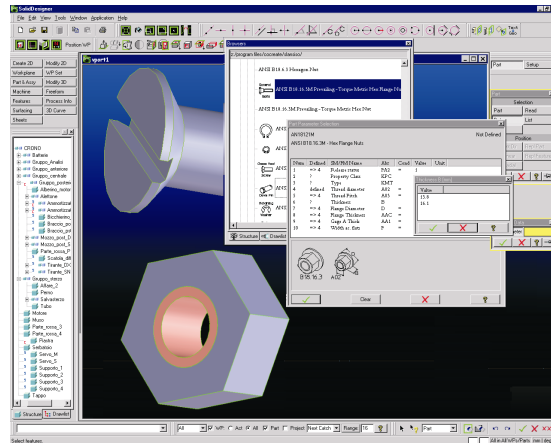
3D Library helps reduce costs and accelerates everyday design work.

Key Features

- Up-to-date, international industry standards.
- 3D standard parts management.
- Easy integration of company standard parts.
- Fully integrated in Modeling.
- Icon-based, guided part selection.
- When used with the management of design data, multiple instances of standard parts are automatically administered and globally shared.
- Standards based data transfer to 2D engineering drawings within the scope of the annotation functionality.
- Powerful parts positioning for multiple instances of parts in linear, circular, or matrix patterns.

International Standards

With 3D Library designers have a ready-to-use library of up-to-date international standards (ISO, EN, and ANSI) for parts, such as screws, bolts, nuts, washers, bearings, pins, bushes, and threads. Each standard gives designers access to potentially thousands of



individual varieties of a part, by specifying the part parameters.

The optional 3D DIN Catalog provides additional certified DIN standards representing about 20,000 different parts.

Customization of Standards

3D Library and the 3D DIN Catalog are implemented on the basis of ISO, DIN, ANSI etc. standard parameter tables.

Designers can easily configure the library and select their set of standard parts, add specific custom varieties, such as extra long screws, or add new characteristics such as stock numbers. Companies can restrict the selection of standard parts, or restrict the number of parameters according to their approved set of standard or preferred parts within their company.

Company Standards

Companies can add their own company standard parts to ensure effective re-use of designs. Standard parts can be included as OneSpace geometry files, or imported via STEP, SAT, or IGES.

3D Parts to 2D Drawings

3D Library parts are transferred to 2D engineering drawings in standards based representations. For example cross-section views of assemblies that contain bolts with threads and threaded holes are represented correctly according to the appropriate standards.

OneSpace Designer Modeling

3D Library

3D Library - Specific Features

3D Library is a standard part library and management system, with:

- Multiple placements of standard parts, either in linear, circular, or matrix patterns
- History menu of recently used parts
- Load/Unload of module within OneSpace Designer Modeling
- Ability to modify and expand

3D DIN Catalog - Specific Features

This additional optional catalog offers:

Configurable set of industry standards selectable at install time from more than 280 DIN standards. This equals about 20,000 different certified parts. Each set of 100 DIN standards requires one 3D DIN Catalog license.

System Requirements

OneSpace 2002 and later.

Runs on same platforms as OneSpace Designer Modeling:

- HP-UX® 11.0/11i (ACE 1199)
- Windows NT™ 4.0
- Windows 2000™
- Windows XP™ professional

HP-UX is a registered trademark of Hewlett-Packard Corporation.
Windows XP, Windows 2000, and Windows NT are registered trademarks of Microsoft Corporation.

Ordering Information	
3D Library	C270
3D Library Support	C270A
3D DIN Catalog	C271
3D DIN Catalog Support	C271A
Prerequisites	
Modeling	C200

Electronic manuals are available on the OneSpace media.

Co|Create

For more information, please contact the following CoCreate offices or visit
www.cocreate.com
www.cocreate.com/eSupport

Germany
Phone: +49 (7031) 951-0

**United Kingdom
and other European countries**
Phone: +44 (1789) 778549

USA
Phone: +1 (970) 267-8000
Toll free: +1 (888) CoCreate

France and Spain
Phone: +33 (1) 69189-113

Italy
Phone: +39 (02) 924425-21

Singapore
Phone: +65 (550) 9665

Japan
Phone: +81 (42) 352-5654

All rights to this documentation, including duplication, distribution and translation rights, are reserved.
Right of technical modifications reserved.
© CoCreate Software GmbH & Co. KG, 05/02

C270_E_2002+