

OneSpace Designer

Modeling

Modeling provides a 3D design solution encouraging innovation, and accelerating the process and quality of your design, helping introduce better products faster. Its Dynamic Modeling technology offers the base for a scalable collaborative design environment.

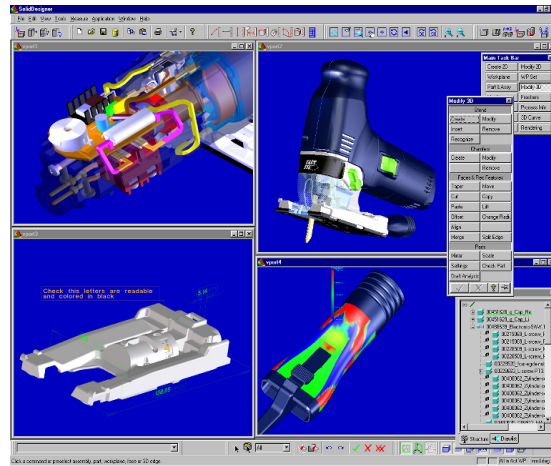
Incorporate Feedback at Any Time

Creating innovative designs quickly, integrating feedback from manufacturing, input from analysis, a bright idea from a colleague... How can a designer incorporate all this into the design and still meet ever shrinking deadlines? OneSpace Designer Modeling is the answer. It provides complete freedom to rapidly design and to incorporate feedback at any stage in the design process. With the Dynamic Modeling technology, designers can treat the model as though it were a piece of clay, making changes directly to the model without worrying about source, history, hidden constraints, parameters, etc.

OneSpace Designer Modeling leap frogs today's design technologies by providing a full design environment where design teams can leverage and collaboratively design with models from any CAD system. With OneSpace Designer Modeling, productivity is high even when working with other people's designs. New team members become productive within hours or days because they can leverage the work of others.

Key Benefits

- **Fast Learning and Rapid Design**
Modeling is easy to learn and use. The 3D CoPilot allows direct interaction with the model. Parts can be created, modified, and positioned on-the-fly.
- **Easy Part and Assembly Handling**
The bottom-up and top-down assembly concept offers an innovative approach to organize mechanical assemblies. By using drag and drop, designers have complete freedom to arrange and change the part structure at any time.
- **Fully Customizable**
The user interface can be fully customized to the designer's personal preferences.
- **Intuitive 3D Solid Modeling**



Modeling offers innovative rapid design techniques to interactively create new parts, and modify existing parts, even on imported models.

- **Dynamic Feedback**
Real-time visual feedback drastically reduces design time, mouse clicks, and command interaction.
- **Best Solution for Drafting Users**
When used with OneSpace Designer Drafting, Modeling forms a unique combination. Drafting users will become immediately productive because of the common design philosophy throughout the OneSpace Solution Suite. This includes the reuse of existing 2D drawings and drag and drop transfer to Modeling. The integrated Accelerator Kit detects and closes gaps in drawings and leverages 2D information into Modeling, ready for creating the corresponding 3D design. Designers can also derive fully 2D-compatible and associative MI drawings from any model.

Process Information

Designers can expand the use of the model by adding process related information to the 3D design, including process notes, analysis results, and dimensions, or URLs. All 3D process information is automatically leveraged into 2D drawings, or can be viewed directly by 3D Access.

Surfacing Capabilities

OneSpace Designer Modeling provides a completely integrated, unified data structure for wire-frame, surface and solid models. Helix, sweeping, or lofting capabilities enable the creation of complex sculptured shapes.

Realistic Imaging Capabilities

Get early feedback and present the

Modeling

“look and feel” of a design by adding textures, materials, lights, reflections, and shadows to your model. Designers can leverage existing settings to create high quality images within minutes.

Sheet Metal Capabilities

Build sheet metal parts by using 3D fold, 3D unfold, modify bends and create bends.

Machining Capabilities

Bring machining knowledge into the concept and detail design stages, through machining features. Receive pro-active advice and real-time validation during the design process.

Drawing Generation Capabilities

Document OneSpace Designer or imported 3D models via 2D drawings. When changes are made to a model, the drawing can be updated automatically at any time to reflect these changes. Supported output formats are: IGES, DXF™, DWG, and MI, the native data format of OneSpace Designer Drafting.

Data Exchange

Designers can exchange models from other systems via STEP, SAT, and IGES. Rules for integrity and repair ensure that imported models can be treated exactly like native OneSpace models.

Additional Modules and Solutions

A wide range of complementary modules are available to meet a company's specific needs. This includes solutions for mold design, mold assembly, project management, sheet metal design, and many more vertical solutions as well as **Personal Collaboration**. Personal Collaboration brings the key benefit of leveraging design and manufacturing knowledge across

the organization by bringing engineers together. It is optimized for a design-centric collaboration use model and allows designers instant access to geographically dispersed teams to discuss product ideas, detect and solve problems in real-time

Key Features

- Floating license for optimized teamwork.
- Wireframe, Surface, and Solidpart and assembly modeling.
- Real-time 3D design changes with direct drag-and-drop techniques.
- Advanced assembly handling: top down and bottom up techniques.
- Sheet metal: 3D fold and unfold, create bends, modify bends.
- Surfacing: Helix, sweep, loft, gather faces, re-insert surfaces.
- Anisotropic 3D scaling
- Advanced blending, chamfering, and tapering.
- Set and store multiple view settings attached to the design
- Add process information: notes, dimensions, URLs, etc.
- Photo realistic imaging.
- Associative 2D drawings.
- Data exchange: STEP, IGES 3D, IGES 2D, SAT, VRML, STL, DXF™, DWG™, DWF, and MI.

System Requirements

- HP-UX® 11.0/11i (ACE 1199)
- Windows NT™ 4.0
- Windows 2000™
- Windows XP™ Professional

Windows XP, Windows 2000 and Windows NT are registered trademarks of Microsoft Corporation. HP-UX is a registered trademark of Hewlett-Packard Corporation. DXF and DWG are trademarks of Autodesk Inc.

Ordering Information

Modeling	C200
Modeling Support	C200A

Electronic manuals are available on the OneSpace media.

CoCreate

For more information, please contact the following CoCreate offices or visit
www.cocreate.com
www.cocreate.com/eSupport

Germany
Phone: +49 (7031) 951-0

United Kingdom and other European countries
Phone: +44 (1789) 778549

USA
Phone: +1 (970) 267-8000
Toll free: +1 (888) CoCreate

France and Spain
Phone: +33 (1) 69189-113

Italy
Phone: +39 (02) 924425-21

Singapore
Phone: +65 (550) 9665

Japan
Phone: +81 (42) 352-5654

All rights to this documentation, including duplication, distribution and translation rights, are reserved.
Right of technical modifications reserved.
© CoCreate Software GmbH & Co. KG, 05/02

C200_E_2002+