

OneSpace Designer Drafting

Drawing Manager

Finding the right drawing can be difficult, but it needn't be. Drawing Manager provides an intuitive and easy to use drawing management solution for users of CoCreate's OneSpace Drafting application, which accelerates the design process, and is the first step to enabling the collaborative design process.

Ease of Use

Drawing Manager is an out-of-box solution that is easy to install, becoming an integral part of the OneSpace Drafting solution.

Through simple, Windows-like menus within the OneSpace Drafting environment, users can easily find, load, and store drawings. The user is automatically notified of changes made by other users.

The "Most Recently Used" function gives access to the same rapid loading tools that Windows applications typically provide.

Drawing Manager accelerates the design process without the high cost, lengthy implementation and long user learning curve associated with other data management solutions.

Powerful Design Support Features

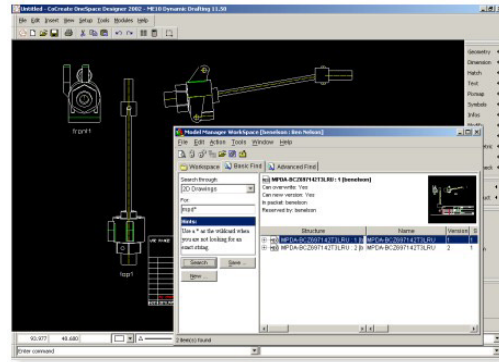
With rich functionality such as basic and advanced finds, pop-up assistants for data entry such as dates, and thumbnail previews, Drawing Manager streamlines the chore of locating the work in process for the design engineers.

Advanced queries may be easily built, and saved for future use. These queries may be created and saved by the individual user, or may also be made available as system queries to all users.

Productivity Accelerators

Drawing Manager provides a unique work organization solution called Packets, which allows the designer to place multiple parts, assemblies, drawings & documentation into a packet, and route it for review and approval, or for further work by others. For example, packets may be used to package up a set of parts and documentation for delivery to a subcontractor.

Drawing Manager also supports life-cycle management through State Flow. Using simple drop down menus,



the state of a drawing may easily be set to Work, Approved, or Released, resulting in increased control of access and change permissions. These states may be customized to match the business processes of the design team.

Design Process Support

Drawing Manager users are able to participate in business processes such as ECR/ECO or review & approve cycles, through simple menu picks.

Drawing Manager manages drawings, including multiple sheets, as well as title-block information based on part or document attributes.

Out of Box Ready

Drawing Manager provides a pre-defined standard configuration, containing all necessary element classes and design attributes, together with user groups and release states appropriate to the design environment. This allows the solution to be used as soon as it is installed.

Team Information Sharing

Drawing Manager provides full support for teams working concurrently in collaborative design environments. Access permissions allow multiple designers to work concurrently on the same assembly without the risk of producing redundant information. Project folders provide an intuitive data organization method, and access may be controlled by project roles.

In addition to managing CAD drawings, Drawing Manager manages all of your engineering documents regardless of file type or source system. Through its optionally available partner solutions, Project Data Manager and Model Manager, other members of the design or manufacturing team have immediate and easy access to design data managed by Drawing Manager. Also, documents, drawings or other engineering data checked in by other users in Project Data Manager or Model Manager are fully accessible to OneSpace Drafting users via Drawing Manager.

Drawing Manager

Bill of Material Management

With the addition of the optional Bill of Materials Manager module, designers benefit from additional functionality for managing bills of material. Bill of Materials Manager allows single- or multiple-level BOMs to be created using a user-friendly, integrated BOM editor. These can be documented by placing graphical BOM tables and position flags on the corresponding drawings.

Secure Information Management

Drawing Manager provides a secure file management environment that verifies and controls multi-user access to engineering data through authentication and authorization, allowing only the right people to access the right information at the right time.

Easy Customization and Extension

Drawing Manager utilizes standard technology such as XML and Java for easy customization and extension.

Product Highlights

- Fully in OneSpace Drafting embedded, comprehensive functionality to manage the 2D-design process.
- Easy-to-use, intuitive drawing management solution for the design environment
- Ready-to-use, with a standard configuration and user profiles.
- On-line help and on-line manuals, based on the HTML format used by Web browsers.
- Flexible solution, easily adaptable to individual needs.

System Requirements

Drawing Manager 2002+ and later.

Runs on same platforms as OneSpace Drafting:

- HP-UX® 11.0/11i
- Windows NT™ 4.0
- Windows 2000™
- Windows XP™ professional

Windows 2000, Windows NT, and Windows XP are registered trademarks of Microsoft Corporation.
HP-UX is a registered trademark of Hewlett-Packard Corporation.
ORACLE is a registered trademark of Oracle Corporation.

Ordering Information	
Drawing Manager	C110
Drawing Manager Support	C110A
Bill of Materials Manager	C430
Bill of Materials Manager Support	C430A
Prerequisites	
ORACLE® (OEM Run-time version)	C500
Drafting	C100

Electronic manuals are available on the OneSpace media.



For more information, please contact the following CoCreate offices or visit
www.cocreate.com
www.cocreate.com/eSupport

Germany
Phone: +49 (7031) 951-0

United Kingdom and other European countries
Phone: +44 (1789) 778549

USA
Phone: +1 (970) 267-8000
Toll free: +1 (888) CoCreate

France and Spain
Phone: +33 (1) 69189-113

Italy
Phone: +39 (02) 924425-21

Singapore
Phone: +65 (550) 9665

Japan
Phone: +81 (42) 352-5654

All rights to this documentation, including duplication, distribution and translation rights, are reserved.
Right of technical modifications reserved.
© CoCreate Software GmbH & Co.KG, 05/02

C110_E_2002+