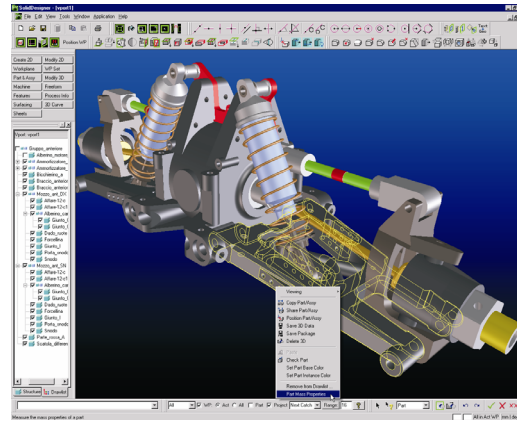


## OneSpace Data Adapters

**CATIA™ Data Adapter**  
**Unigraphics™ Data Adapter**  
**Pro/ENGINEER™ Data Adapter**  
**I-DEAS™ Data Adapter**  
**SolidWorks™ Data Adapter**

OneSpace native CAD Data Adapters support the integration of OneSpace Designer and Collaboration into a customer's existing environment.



### Bi-directional Connectivity to Traditional CAD Systems

OneSpace Data Adapters empower companies to use the OneSpace Solution Suite together with existing CAD systems. Companies can collaboratively design with partners using any CAD system. Designs for single parts or complete products can be leveraged into OneSpace and directly exchanged with these systems in their native formats. OneSpace Data Adapters speed up the product development cycle since there is no need for additional conversion to a standard format.

### Key Benefits

#### Data Quality

Data imported and exported using a OneSpace Data Adapter is of better quality than data exchanged using standard links. Data loss is close to zero. CoCreate's test suite demonstrated a tremendous success rate, the OneSpace Data Adapters beat the STEP and IGES standard interfaces in 95% of the tests, based on quality of data.

#### Support of Complete Processes

Once loaded into OneSpace, data imported using a OneSpace Data Adapter behaves like native data. As such, it can be modified dynamically without restriction. All downstream processes in the development cycle can be applied to the imported designs.

### OneSpace Data Adapters – Details

#### Pro/ENGINEER Data Adapter

The Pro/ENGINEER Data Adapter supports native CAD data transfer for Pro/ENGINEER 2000i<sup>2</sup> and 2001.

There are two parts to the software:

- The Pro/ENGINEER Data Adapter for OneSpace
- The plug-in for Pro/ENGINEER

#### CATIA Data Adapter

The CATIA Data Adapter supports native CAD data transfer for CATIA 4.2.0 through 4.2.4.

- Import session files directly into OneSpace
- Solid, volume, skin and face information is preserved when importing into OneSpace

There are two parts to the software:

- The CATIA Data Adapter for OneSpace
- The plug-in for CATIA

#### Unigraphics Data Adapter

The Unigraphics Data Adapter supports Unigraphics 11 to 18 via Parasolid (7.0 through 13.2). It also supports the bi-directional exchange of native data for Unigraphics 17 and 18.

There are two parts to the software:

- The Unigraphics Adapter for OneSpace
- The plug-in for Unigraphics

#### I-DEAS Data Adapter

The I-DEAS Data Adapter supports native data transfer for I-DEAS MS8 and 9.

There are two parts to the software:

- The I-DEAS Adapter for OneSpace
- The plug-in for I-DEAS

#### SolidWorks Data Adapter

The SolidWorks Data Adapter supports all versions up to and including SolidWorks 2001 and 2001Plus (based on Parasolid 7.0 through 13.2).

## OneSpace Data Adapters

# CATIA Data Adapter Unigraphics Data Adapter Pro/ENGINEER Data Adapter I-DEAS Data Adapter SolidWorks Data Adapter

### Key Features

- Fully integrated with OneSpace Designer and Collaboration
- I-DEAS, Pro/ENGINEER, Unigraphics, and CATIA, and SolidWorks Data Adapters support exchange of parts, shared parts, and assembly structures
- Imported models behave like native OneSpace models

### System Requirements

- OneSpace 2002 and later.
- Run on the following platforms:
- HP-UX<sup>®</sup> 11.0/11i (ACE 1199)
  - Windows NT<sup>™</sup> 4.0
  - Windows 2000<sup>™</sup>
  - Windows XP<sup>™</sup> professional
  - Sun Solaris 7.0<sup>™</sup>

Windows NT and Windows 2000 are registered trademarks of Microsoft Corporation.  
Parasolid is a trademark of Unigraphics Solutions Corporation.  
HP-UX is a registered trademark of Hewlett-Packard Corporation.  
CATIA is a registered trademark of IBM Corporation.

Pro/ENGINEER is a registered trademark of Parametric Technology Corporation.  
I-DEAS is a registered trademark of Structural Dynamics Research Corporation.  
SolidWorks is a registered trademark of Dassault Systemes S. A.  
Solaris is a registered trademark of Sun Microsystems Inc.

### Ordering Information

CATIA Data Adapter	C600
CATIA Data Adapter Support	C600A
Unigraphics Data Adapter	C610
Unigraphics Data Adapter Support	C610A
Pro/ENGINEER Data Adapter	C620
Pro/ENGINEER Data Adapter Support	C620A
I-DEAS Data Adapter	C630
I-DEAS Data Adapter Support	C630A
SolidWorks Data Adapter	C640
SolidWorks Data Adapter Support	C640A

### Prerequisites

Modeling	C200
or	
Collaboration	C800

Electronic manuals are available on the OneSpace Media.

# Co|Create

For more information,  
please contact the following  
CoCreate offices or visit:  
[www.cocreate.com](http://www.cocreate.com)  
[www.cocreate.com/eSupport](http://www.cocreate.com/eSupport)

**Europe**  
Phone: +49 (7031) 951-2222

**USA**  
Phone: +1 (970) 267-8000  
Toll free: +1 (888) CoCreate

**Japan**  
Phone: +81 (42) 352-5654

**Taiwan**  
Phone: +886 (227) 595505

**Korea**  
Phone: +82 (2) 559-0711

**Singapore**  
Phone: +65 (550) 9665

All rights to this documentation, including  
duplication, distribution and translation  
rights, are reserved.

Right of technical modifications reserved.  
© CoCreate Software GmbH & CO. KG,  
09/02

C600-640\_E\_2002+